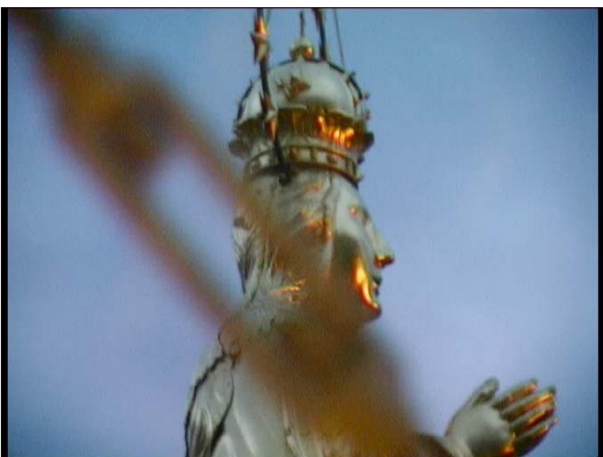
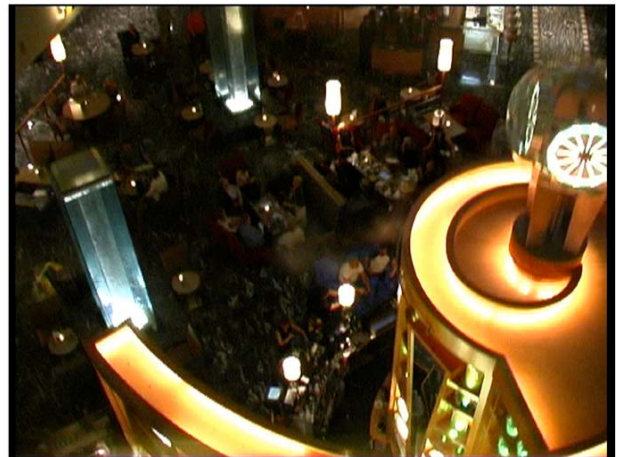


ASCENSION & DEPRESSION MARQUIS

Video installation, Myriam Thyès, 2004 / 2009, DV Pal, 2:23, loop, stereo.

INSTALLATION: the two videos should be installed as large projections, opposite of each other, looping.



ASCENSION

2004, video DV PAL (4:3), color, 1:11, stereo.
Director, script, camera, editing, sound (Flute): M. Thyès

The glass elevator at the luxurious hotel Marriott Marquis in New York brings you to "heaven" ... We are brought up and taught to strive for higher things – success, wealth, honour, spiritual enlightenment - and their compensation.

DEPRESSION MARQUIS

2009, video DV PAL (4:3), color, 2:23, stereo.
Director, script, camera, editing, sound: Myriam Thyès

The glass elevator at the luxurious hotel Marriott Marquis in New York drives down - the long ride ends in glacier ice. A Metaphor for depressions which can affect people living in abundance.